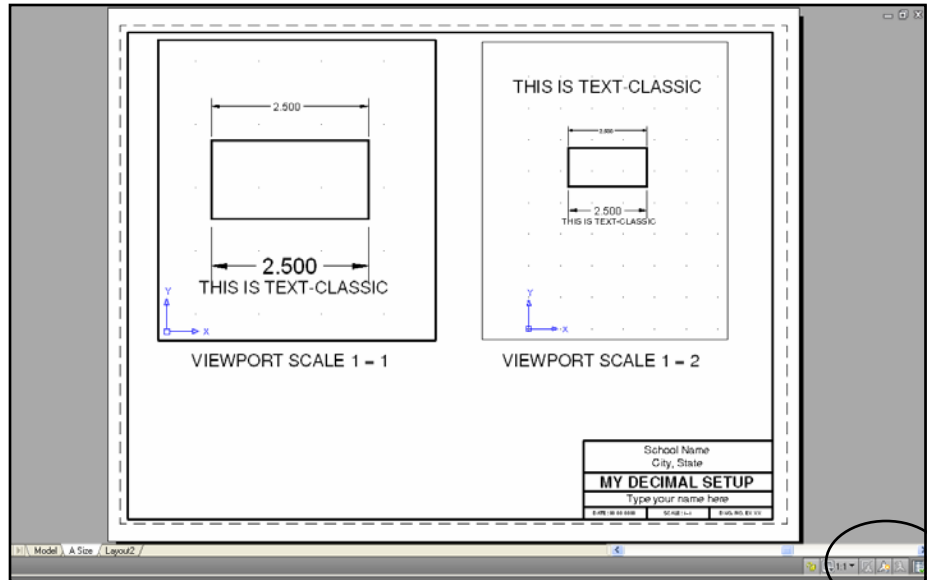


# ANNOTATIVE OBJECTS....continued



**Annotation Visibility**

If you would like to see all of the annotative objects in all of the viewports, select the **Annotation Visibility** button.



OFF (Blue light bulb) Show Annotation objects for current scale only. (example on previous page)



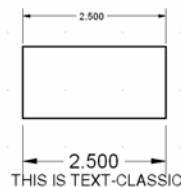
ON (Yellow light bulb) Show Annotation objects for all scales. (example above)

---

## Select the Model tab

If you select the **MODEL** tab you will see the rectangular object and all of the Dimensions and Text. They all appear differently because they are separate objects and they have different Annotative scales.

THIS IS TEXT-CLASSIC



Note:

Usually this method is very acceptable because you will normally dimension in the layout tab not the model tab. But If you would prefer to have only one set of dimensions and text displayed in model space refer to page 27-6 to learn how to assign multiple annotative scales to each dimension or line of text.